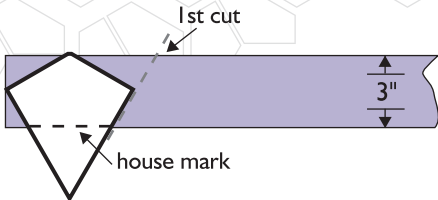
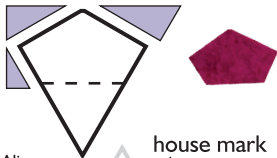


house.

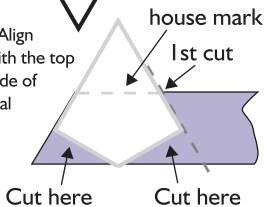
Step 1. Using a single layer 3" strip, place the **Polygon Tool** house mark with the bottom edge of the fabric. Cut diagonal for 1st cut.



Step 2. Trim the three remaining sides.



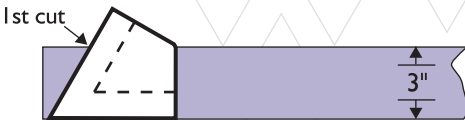
Step 3. Reverse tool. Align the house mark even with the top edge of the fabric and side of tool with the cut diagonal edge from Step 1. Cut diagonal edge for 1st cut, then trim the two remaining sides.



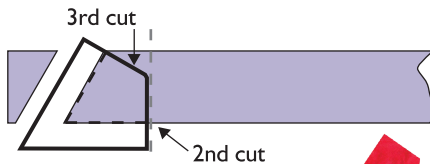
Step 4. Repeat Step 3 as needed.

kite.

Step 1. Using a single layer 3" strip, place the Polygon Tool edge even with the bottom edge of the fabric. Cut along the diagonal edge for 1st cut.



Step 2. Align the kite marking even with the tip of the fabric and cut the perpendicular edge, 2nd cut. Then, cut the remaining edge, 3rd cut.



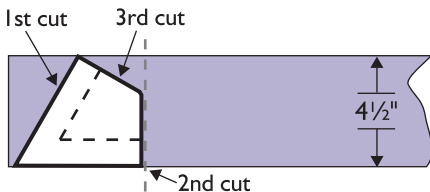
Step 3. Repeat as needed.

kite2.

Step 1. Using a single layer 4 1/2" strip, place the Polygon Tool edge even with the bottom edge of the fabric. Cut along the diagonal edge for 1st cut.

Step 2. Cut the perpendicular edge, 2nd cut, then, cut the remaining edge, 3rd cut.

Step 3. Repeat as needed.



For more **Polygon** fun, visit www.ColourfulStitches.com.

© 2015. Gyleen X. Fitzgerald.